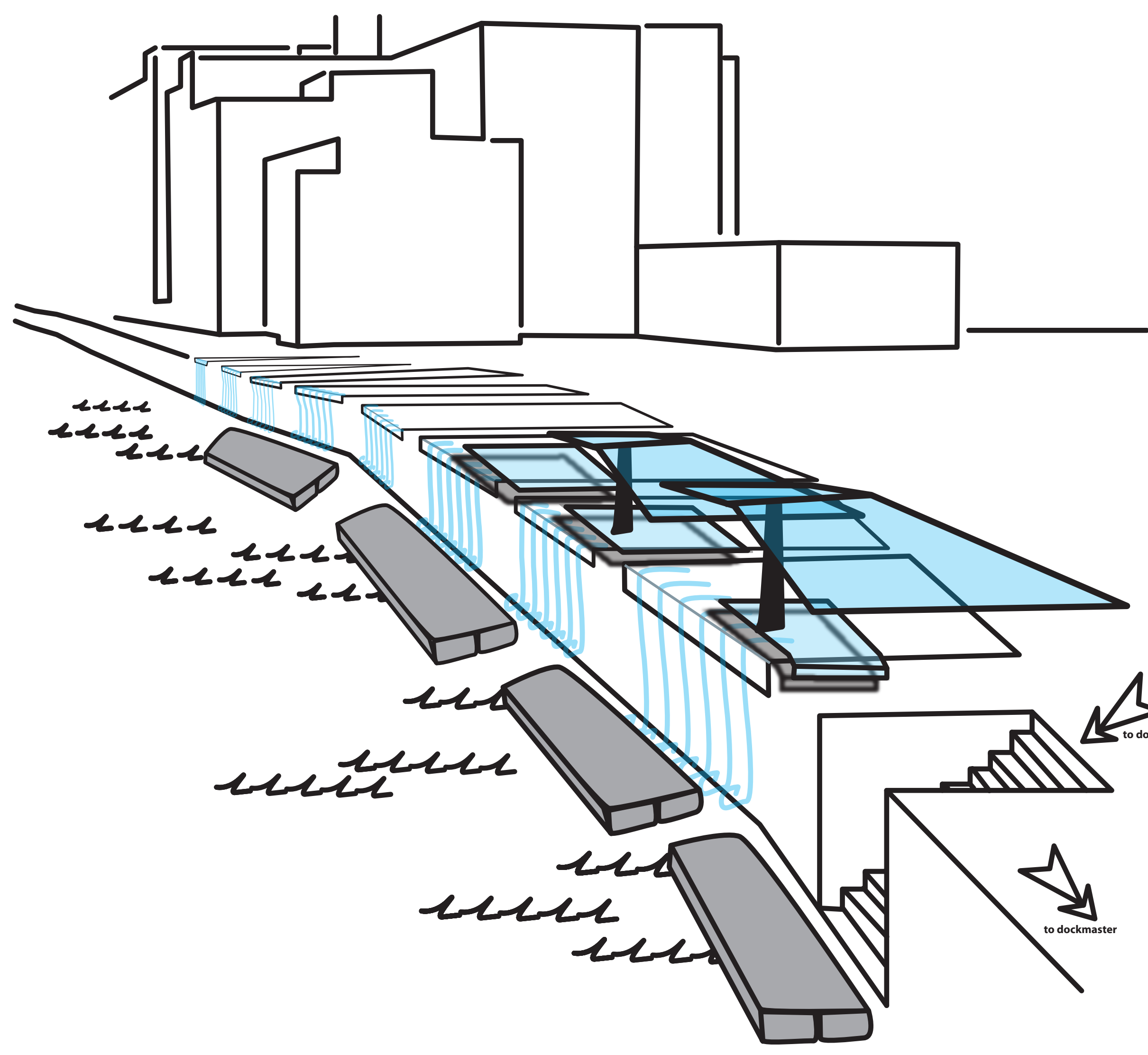
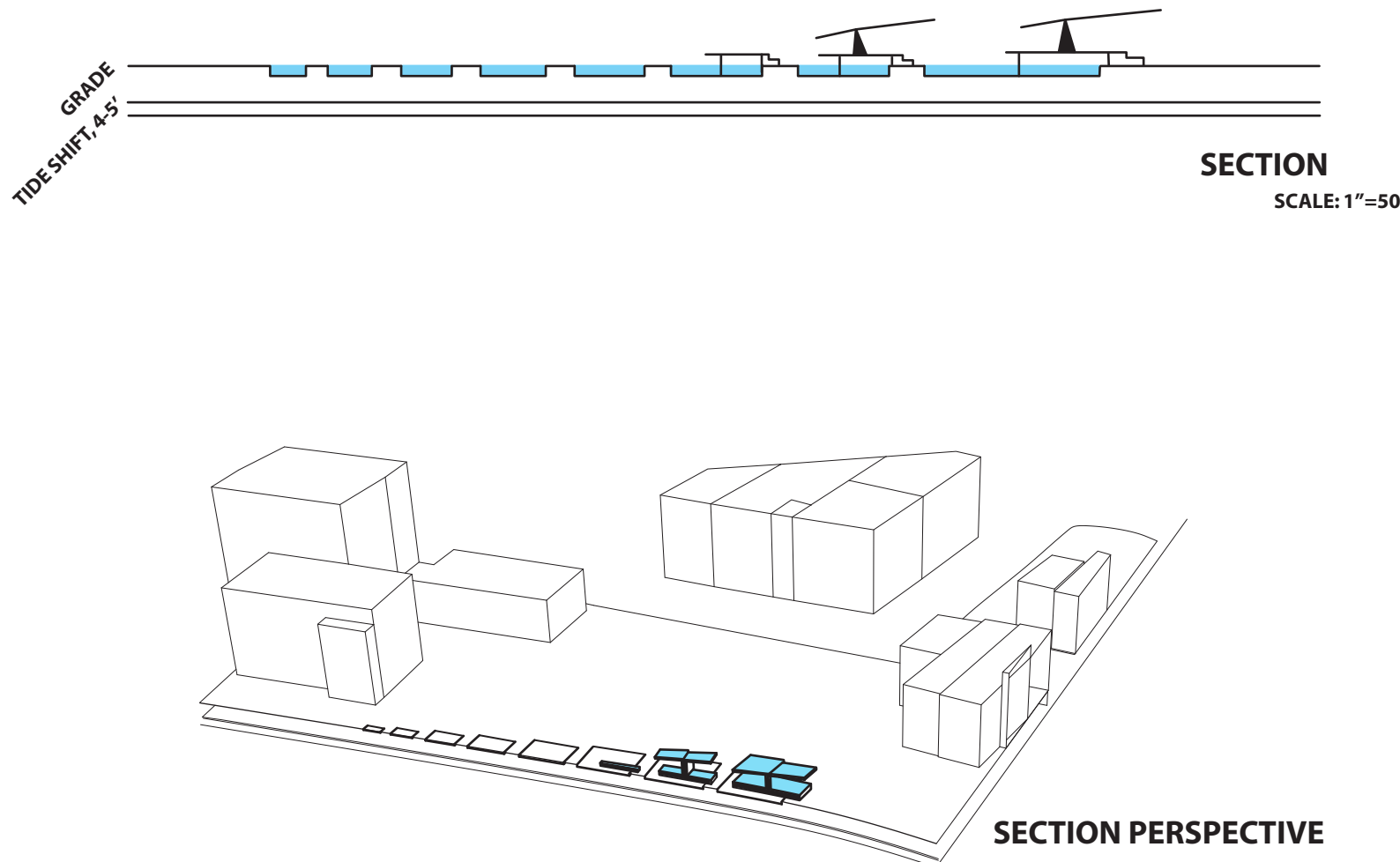


wave front : water front

an exploration into the use of auditory and visual phenomena to create a single wave front.

The intervention described below is intended to stimulate the public's visual and auditory senses; making them aware of water. This is accomplished by a series of reflecting pools, raised glass platforms, glass canopies and a site-specific installation of waterfalls. These waterfalls spill from the pools into the Hudson River. The water is pumped from below and is regulated by computer-operated gates and pumps. The installation runs continuously and has a completion cycle of about 1 hr. A stairway was added; going down 10' to the high tide mark with a ramp to accommodate tidal shifts. The docks remain the same. During the winter, the intervention would not run water. Instead, there would be lighting within the pools and in the canopies to create ambiance through the snow drifts (not shown).

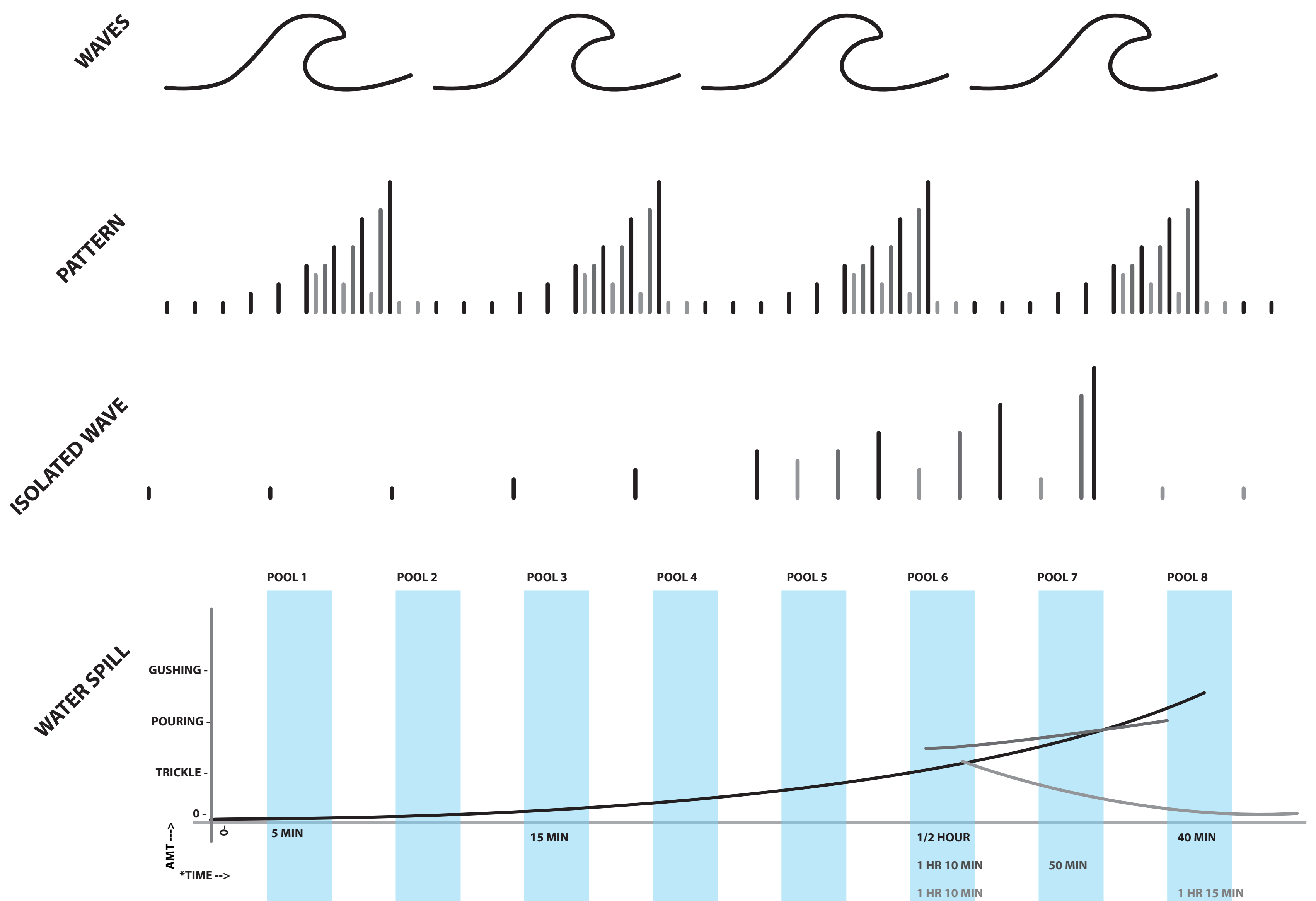
The impetus for this project came from studying the motion and sound of a wave front crashing onto a beach and the falling of water at the 1st lock of the Erie Canal. Upon studying the curvature of a "breaker" wave, I found that there was a pattern of movement and sound. The pattern can be described as a surging crest, a retreat and a release. I used this pattern to create the architectural intervention. The wave pattern takes only seconds to complete. However, stretching it over time allows the viewer to not entirely be made aware of what is going on. This subtle motion would be a surprise if noticed, but just as soothing and enjoying if not. It would not be an overwhelming nor underwhelming experience; promoting return visits. The wide space it covers allows people to walk along the edge from above and below... enjoying the water falling in different places, with variant amounts of water and at different times. The glass platforms and canopies would facilitate reflection of the installation and also provide an "up close and personal" feel.



1ST LOCK OF THE ERIE CANAL: WATER CURTAIN IMAGERY



WAVE FRONT SOUND/MOVEMENT ANALYSIS:
 *DETERMINING THE SHAPE, SIZE AND WATER FLOW PATTERN FOR THE SITE'S INTERVENTION AS A BREAKER WAVE HITS A SHORELINE
* THE SHAPE AND SIZE OF THE SITE CAN BE SEEN IN THE PERSPECTIVE, SECTION AND PLAN VIEWS



- COLOR KEY: CYCLES OF A WAVEFRONT
- RISE AND CREST
 - 2ND WAVE/RETREAT
 - CRASH AND SPREADING ONTO LAND